

Welcome to Kunsan Air Base

“Home of the Wolf Pack”

Dear Guest,

Welcome to Wolf Pack Lodge, the newest AF Lodging facility in the ROK. Kunsan Air Base is home to the 8th Fighter Wing, also known as the “Wolf Pack,” a nickname given during the command of Colonel Robin Olds in 1966. Our mission is “Defend the Base, Accept Follow on Forces, and Take the Fight North,” the warriors here do an amazing job ensuring mission success. Kunsan AB plays host to many personnel, in all branches of the service, in support of our numerous peninsulas wide exercises each year. We are proud to serve all the war fighters who participate in these exercises and ensure our “Fight Tonight” capability.

To ensure you have a great stay with us, I would ask if you reported any problem with your room to our front desk staff immediately, so we can try to resolve the issue, and you can focus on your mission here. If any aspect of your stay is less than you would hope for, please call me at 782-1844 ext. 166, or just dial 166 from your room phone. You may also e-mail me at eden.kurashima_hawkins.2@us.af.mil, I will answer you as quickly as possible.

We are required to enter each room at least every 72 hours, this is not meant to inconvenience you, but to make sure you are okay, and see if there is anything you need. If you will be working shift work while here and would like to set up a time that is best for you to receive housekeeping service, please dial 157 from your room phone, and the Housekeeping Manager would be happy to schedule your cleaning between 0800 and 1600.

KURASHIMA
HAWKINS.EDEN.1365
626240

Digitally signed by KURASHIMA
HAWKINS.EDEN.1365626240
Date: 2025.12.08 10:59:23
+09'00'

EDEN KURASHIMA HAWKINS, NF-IV
Lodging General Manager

Defend the Base, Accept Follow on Forces, Take the Fight North

Security Forces & Safety

Emergencies Call

- From Guest Room 9-911
- From Any Government DSN Phone On Base 911
- Non-Emergency 782-4945
- Cellular 063-470-0911
- Off Base 470-0911

Status of Forces Agreement Covers

- Military members/dependents, civilian employees and government contractors must carry a valid military DOD ID card and/or SOFA card at all times!
- Kunsan law enforcement numbers are listed on the SOFA card.
- Call Security Forces if you are in an accident, incident, arrested or detained.
- Do not sign documents you do not understand.

ID Cards

- Must be carried at all times!
- Lost IDs MUST be reported to Security Forces before MPF will issue a new card.

Curfew Policy

- Check with the Front Desk for the most current curfew hours.

Off Limits Areas

- Please refer to the Kunsan Community Standards for the latest off-limit areas available at the Front Desk.

Lodging Safety

The following restrictions are in place for the safety of all guests:

- No Smoking in lodging; all rooms are 100% smoke-free, candles are prohibited.
- Storing highly flammable liquids/materials in your room.
- Using cooking or heating devices other than those provided
- Placing charcoal grills within 15 feet of the building
- Placing hot appliances such as irons, coffee pots, etc., in drawers or on furniture
- Overloading electrical circuits
- Leaving heated cooking or electrical appliances unattended

*Additionally, please use the peephole to identify visitors before opening your door.
Be prepared to show identification if returning to your room while cleaning is in progress.

Security Force & Safety

Fire Evacuation Procedures

1. ALL GUESTS ARE DIRECTED TO IMMEDIATELY EXIT ROOM AND HEAD TOWARDS NEAREST BUILDING EXIT DOOR THAT IS AWAY FROM THE FIRE.
2. REMAIN CALM AND GO TO PRE-DESIGNATED **ASSEMBLY POINT** DIRECTLY (LOCATED AT **REAR PARKING LOT** EAST 75 FEET AWAY FROM LODGING BUILDING 314).
3. PLEASE STAND BY FOR THE COUNT BY LODGING STAFF.
4. FIRST AID/BUDDY CARE WILL BE PERFORMED ON ANY INJURED PERSONNEL UNTIL RELIEVED BY QUALIFIED PERSONNEL.
5. ALL PERSONNEL WILL STANDBY FOR FURTHER DIRECTION FROM BASE AUTHORITY.

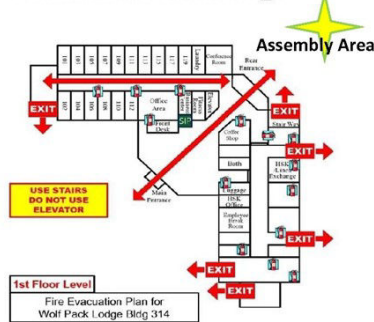
Wolf Pack Lodge (Bldg. 314)

EXIT Evacuation plan

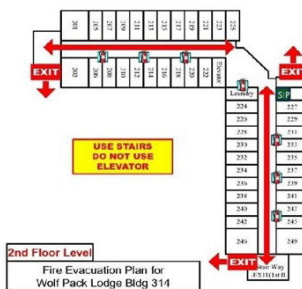
 Fire Extinguisher

SIP Shelter in Place

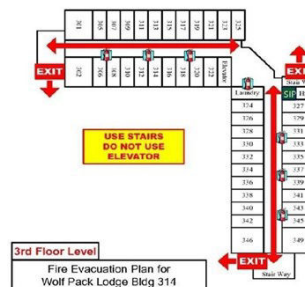
Fire Evacuation Plan for GIB_1



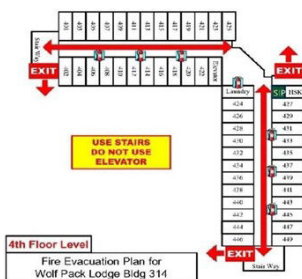
Fire Evacuation Plan for GIB_2



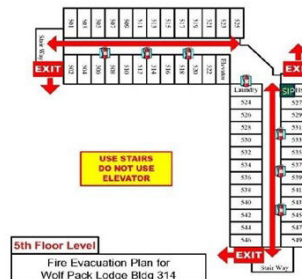
Fire Evacuation Plan for GIB_3



Fire Evacuation Plan for GIB_4



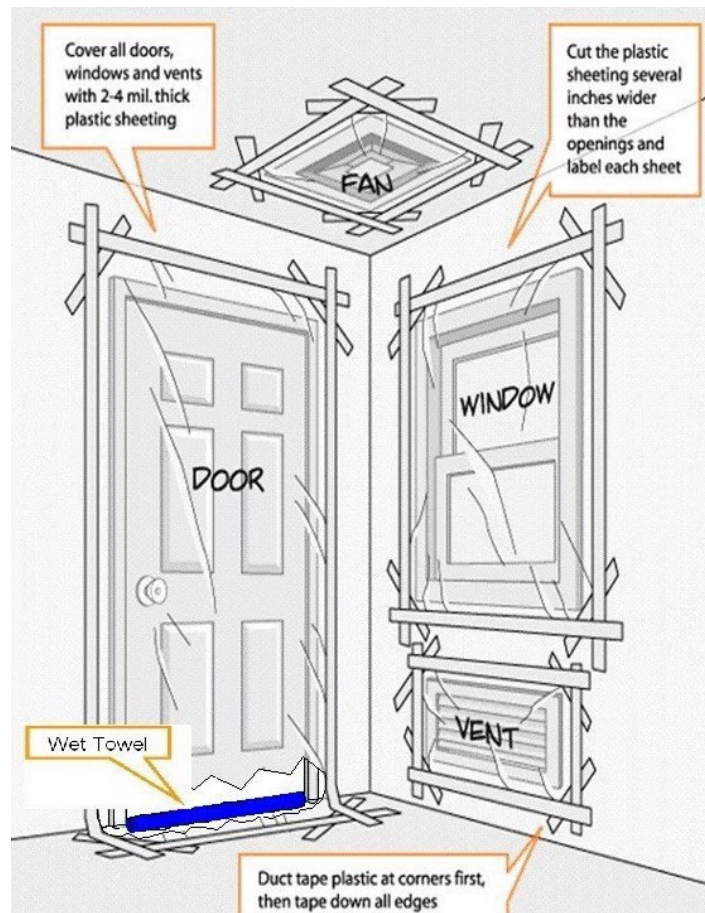
Fire Evacuation Plan for GIB_5



Actions to Take

Sheltering-in-Place

1. Bring everyone safely inside to an interior room or one with as few windows and doors as possible.
2. Turn off all heating, ventilation, and air conditioning (HVAC) systems.
3. Close and secure all doors, windows, vents, and other exterior openings.
4. Grab Shelter in place kit from under the bathroom sink.
5. Cover the vents and entrance door with plastic sheets. (12X12) x3 for vents and (42x88) x2 for the entrance door.
6. Listen to the loudspeaker or commander's channel for further instructions.
7. When the "all clear" is announced, open windows and doors, turn on ventilation systems, and go outside until the building's air has been exchanged with the outside air.
8. Once you are in a safe place, muster with your command if you are military or civilian personnel or a member of the selective reserves.



Guest Responsibilities

- ◆ Be responsible for your conduct and your guests, and/or family members.
- ◆ Please use audio equipment and television at reasonable levels during all hour as your neighbor may be working on a shift schedule.
- ◆ Please do not remove any lodging property. Report any damage to the rooms, furnishings, or linens. There is maintenance form located in the drawer.
- ◆ Please ensure all room, phone, and sundry charges are paid prior to departure.
- ◆ Please use the closest stairway evacuation route. Inform the Front Desk of any safety issues that are identified.
- ◆ Help us conserve utilities. We also invite you to conserve other natural resources.
- ◆ You can secure your valuables in a safe located in your room. Security storage is available in the guest luggage room located in the main lobby area.
- ◆ Display the “do not disturb” sign to ensure uninterrupted rest. Please remove sign when not in the room. For health and safety standards our cleaning staff must have access to provide service at least every 72 hours.
- ◆ Please do not bring bikes/PTD into the lodge. A charge will be assessed if you bring your bike/PTD into guestroom. There is a PTD rack located near the rear entrance.
- ◆ Please do not bring pets into lodging. This is Not a Pet Friendly facility. A charge will be assessed if you bring a pet into the Wolf Pack Lodge.
- ◆ Wolf Pack Lodge is "No Smoking" facility. Use designed smoking area (DTA) located behind the lodge in front of the pavilion.

Guest Services

Check Out

- Check Out time is 1100.
- Should you require a late check out, please contact the Front Desk. A late checkout fee, equivalent to one (1) night stay may be assessed.

Check Cashing

- Checks may be accepted for room charges only. Check cashing services are available at AAFES Base Exchange and the Loring Club cashier's window.

Classified Document Storage

- Contact base operations or command post at 782-6000 and follow proper protocol for classified items.

Bicycles

- Please do not bring bikes into the lodge. There is a bike rack located near the rear entrance.

Business Center

- Business Center is located behind the Front Desk in the main lobby.

Conference Room

- Conference Room is located next to the rear entrance.

Express Check Out

- Call the Front Desk for your charges, verify your credit card number and time of departure and all rooms, phone and sundry fees.

Room Rates

- \$60.00 per bed night
 - * Please call 782-1996(Protocol) to make a DVQ/LDVQ reservation.

Fax & Internet Service

- Contact the Front Desk for official faxes.
- Wolf Pack Lodge provides Free Wi-Fi Internet Service.

Hours of Operation

- The Front Desk is open 24 hours, 7 days a week.
- Our customer service representatives are always available to assist you.

Guest Services

Housekeeping Services

Provided daily, unless a “Do Not Disturb” sign is posted on the door. (*For health and safety reasons, housekeeping staff or lodging management will enter a guest room that has a “Do Not Disturb” sign for three consecutive days.) Paper products are at the Front Desk if you are a shift worker or require specialized cleaning service.

■ STAYOVERS (Limited Service) (Daily Service)

- Wastebaskets cleaned and emptied
- Coffee/tea and sundries (Business Suites only) setup restocked
- Amenities provided for an initial night's stay, additional supplies available at the Front Desk
- Floors and carpet clean (to include under and behind furniture)
- Beds made in accordance with established AF Inns standards
- Bathtub/shower cleaned inside/out
- Bathroom vanity, sinks, toilet and mirrors cleaned
- If towels are found on floor, replace them with fresh ones

■ EXTENDED STAYOVERS (Full Service) (Every 7 days)

All items listed under LS should be completed in addition to the following:

- Sheets changed and bed made in accordance with established AF Inns standards
- Light dusting completed and furniture polished
- Shower curtain/door clean (to include wiping down underside of glass shower doors, etc.)
- Vacuum/mop floors

Ice Machines

- Ice machines are in the laundry room(s) on all floors.

Laundry Washers & Dryers

- Provided free of charge to our registered guests.
- Laundry detergent is available at the Laundry Room and Sundry shop at the front desk

Length of Stay

- Length of stay will be based on room availability.
- Please contact the housing office at 782-4088 to verify dormitory space and TLA entitlements.

Linen & Towels

- Please do not remove government owned linens or towels from your quarters or use them for other than their intended purpose, i.e. polishing shoes, vehicles, etc.
- If you need additional linen or towels, please contact the Front Desk staff.

Guest Services

Mail

- Lodging Personnel are not authorized to receive or issue guest mail.

Maintenance

- Should your room require maintenance, please notify the Front Desk staff, or complete the Maintenance Request form located in the desk drawer in your room.

Maps

- We have a variety of on base and off base maps at the Front Desk. There is map to the Kunsan off base Medical Center and a base map locating the Kunsan AB Medical Center located across the street (3 on the base map).

Messages

- Our guest room telephones are equipped with voicemail and message indicator light.

Movie Rental

- DVD's are available for rental at the Front Desk in the main lobby and in the Falcon Community Activity Center.

Newspapers

- Stars and stripes newspapers are available for purchase at the main lobby entrance, AAFES Base Exchange, Post Office or the AAFES Food Court.

No Pets

- Pets are not authorized in lodging.
- Per DAFMAN 34-135, a \$150.00 cleaning/deodorizing fee may be assessed for non-adherence to this policy, and it can result in cancellation of your stay.
- Please contact the Front Desk for a list of local pet kennels or call Jeil animal Clinic at 063-461-5079. Open Daily 0930-2400

No Smoking

- All Wolf Pack Lodge Rooms are 100% smoke-free. A \$150.00 cleaning/deodorizing fee may be assessed as non-adherent to this policy, and it can result in cancellation of your stay. Please use the designated smoking areas as identified and posted in accordance with 8th F Base Policy.

Payments

- In accordance with DAFMAN 34-135, to keep accounts current, long-term guests must make payments at least every 15 days.
- If a credit card number is on file, 15-day balance will be charged, and receipts may be picked up at the Front Desk.

Guest Services

Rickenbacker's Coffee Shop Is located right across from the Front Desk.

- Mon-Sun: 0630-1200

** The operation time would change.

Sundry Drinks, Foods, Snacks, Liquor, and Medicine.

- Sundries are available at the front desk.
- 24/7 for your convenience.

Wake-up Call Services

- Wakeup call service is available by calling the Front Desk staff.
- In addition, alarm clocks are provided in each room.

Dialing Instructions

EMERGENCY	911		
From Cellular	063 - 470 - 0911	From Off Base	470 - 0911
Non-emergency	782 - 4944	From Off Base	470 - 4944

PLACING CALLS

- To Base Operator 9 - 782 - 1110
- To Reception Desk 0, or 9 - 782 -1844 - 1 (or Follow the Voice Prompts)
- To Another Guest Rm Room Number
- On-Base Calls (782 prefix only) 9 - Seven Digit Number

DSN Calls

PACAF	9 - Number	CONUS	9 - 312 - Number
ALASKA	9 - 317 - Number	EUROPE	9 - 314 - Number

Toll Free to US 800(or 866, 877, 888)

- 9 - 800 - XXX – XXXX or Press 0, and our front desk staff will be happy to assist you. No off-base calls are allowed from guestrooms. To make official off-base calls, guests must obtain a TCN(Telephone Control Number) from the 8th Communication Squadron.

To use Pre-paid Phone card:

- Press 0 and let the front desk staff know the provider's number.

RECEIVING CALLS

**All incoming calls are received through our automated system. Please follow the voice prompts. **

- Commercial 011 - 82 - 63 - 470 - 1844 - 1 - Room Number - #
- 0505-122-XXXX Number 011 - 82 - 63 - 470 - XXXX - 1 - Room Number - #
- 782-XXXX Number 782 - 1844 - 1 - Room Number - #
- DSN 315 - 782 - 1844 - 1 - Room Number - #

How to call off base from your cell phone:

- Dial area code (063) – Number (XXX-XXXX)

SPECIAL SERVICES:

Voice Mail Press Message Button or dial room number on phone (follow voice prompts)

Wake up Calls Press 0, and please let our front desk staff know your request time.

**If the message light is blinking, but the automated system indicates that there is no new message, please call the Reception Desk by dialing 0. **

Base Services

From Commercial / Off-Base Line: 063 – 470 – XXXX

FITNESS & SPORTS

FITNESS & SPORTS CENTER

Bldg 1055, 782-4026

Mon-Thu: 0430-2200

Fri: 0430-1800

Sat-Sun: 0900-1600

NORTH BOWLING CENTER

Bldg 1057, 782-4608

Mon-Thu: 1100-2300

Fri: 1100-0100

Sat: 1200-0100

Sun: 1200-2300

WEST WINDS GOLF COURSE

Bldg 387, 782-5435

Daily: 0700-Dusk

LEARN & CREATE

ARTS & CRAFTS CENTER

Bldg 517, 782-6904

Mon-Sat: 0800-1700

Closed on Sundays & RoK Holidays

EDUCATION & TRAINING CENTER

Bldg 1051, 782-5148

Mon-FRI: 0830-1630

Sat & Sun: Closed

ROSENBLUM MEMORIAL LIBRARY

Bldg 1050, 782-5469

Mon, Tue, Thu, Fri: 0930-1800

Wed: 0930-2000

Sun & Sat: 1000-1600

RESOURCES

MILITARY & FAMILY READINESS

Bldg 755, RM 127, 782 - 5644

Mon, Tue, Thur & Fri: 0800-1700

Wed: 0900-1700

Closed on U.S. holidays

CIVILIAN PERSONAL

Bldg 755, RM 213, 782-4183

Mon-Fri: 0800-1600

MILITARY PERSONAL

Bldg 755, 782-7220

Mon-Fri: 0800-1500

Closed on down days, U.S. holidays, and every 3rd Thursday of the month

MANPOWER

Bldg 755, RM 321, 782-4020

Mon-Fri: 0800-1700

Base Services

POST OFFICE

Bldg 1058, 782-5514

Finance Section

Mon-Fri: 1000-1700

Sat: 1000-1400

Pick Up Window

Mon-Fri: 1000-1730

Sat: 1000-1400

In/Out Processing

Mon-Fri: 1000-1700

Sat, Sun & Holidays: Closed

WOLF PACK LODGE

Bldg 314, 782-1844

Open 24 Hours

MARKETING

Bldg 755, Rm 321, 782-7211

Mon-Fri: 0800-1600

Closed on RoK & Federal holidays

DINING

LORING CLUB

Office: 782-4312

Mon-Fri: 0800-1630

Cash Cage: 782-5480

Sun: 1000-1600

Mon-Sat: 1000-2130

Catering Office: 782-4700

Mon-Fri: 0800-1700

Appointments preferred

WOLF PACK CAFE

Bldg 1027, 782-5985

Cell: 010-9917-7841

Daily: 24/7

Delivery Service: 1800-2400

Dining Room

Lunch Buffet: 1100-1300

Dinner

Tue: 1700-2000 (**Steak Night**)

Thu: 1700-2000 (**Mongolian BBQ**)

Mickley's Pub

Mon-Thur: Opens at 1700 Pizza

Monday: 1700-2000

Taco Tuesday : 1700-2000

Wing Wednesday: 1700-2000

Fri - Sat : 1700-0200

Olds Room

Fri: 1700-2400

Open per request

RICKENBACKER'S (Coffee & Breakfast)

Bldg 314, 782-7451

Mon-Sun : 0630-1200

Base Services

D-PAD DFAC

Bldg 2548, 782-4688

Breakfast: 0500-0830
Lunch: 1100-1330
Dinner: 1600-1800
Midnight: 2400-0200
Closed on weekends and holidays

BOGEY'S BAR & GRILL

Bldg 387, 782-4100/4102

Daily: 1100-2100
Delivery: 1100-2100

BAR

Daily: 1100-2200
Break Time: 1500-1600

O'MALLEY DFAC

Bldg 550, 782-5160

Monday-Friday

Breakfast: 0500-0830
Lunch: 1100-1330
Dinner: 1700-2000
Midnight: 2300-2400

Weekends/Holidays/Down days

Brunch: 0700-1300
Supper: 1700-1930
Midnight: 2300-2400

CULTURE & TRAVEL

OUTDOOR RECREATION

Bldg 517, 782-6904

Tue-Sat: 0800-1700
Closed on Sun, Mon & RoK Holidays

FALCON CAC TOUR

Bldg 1027, 782-4679/5213

Daily : 0600-2130
Closed on RoK Holidays

US Airline Alliance

Bldg 1027, 782-7663
Mon-Fri: 1000-1700
Sat, Sun & Holidays: Closed

Gas Station

Bldg 1108, 782-4519
Mon-Fri: 1000-1800
Sat: 1000-1500
Sun: Closed

THE EXCHANGE

Popeyes, Anthony's Pizza, Burger King, Taco Bell, Subway, Starbucks, Dunkin, Smoothie King, Stores, Services, etc.

Kunsan Main Exchange

Bldg 1102, 782 – 4426
Mon-Fri: 1000-2100
Sat-Sun: 1000-2000
<https://www.shopmyexchange.com/exchange-stores/Korea/AP/APO/Kunsan-Main-Exchange-1761238>

Commissary

Bldg 1115, 782 – 4414, 782-5437
Mon-Fri: 0700-1900, Sat-Sun: 0700-1800

[Kunsan AB | Commissaries](#)

Base Services

THEATER

Bldg 710, 782-4987

<https://www.aafes.com/exchange-stores/Movie-Guide/showtimes-Kunsan-AB.htm>

SHOPPETTE

Bldg 1108, 782-5456

Mon-Sat: 0730-2100

Sat: 1000-2000

Sun: Closed

BASE CHAPEL

[Chapel \(af.mil\)](#)

Base Chapel:

Monday-Friday: 0800-1630

Number: 782-**HOPE (4673)**

For after hours emergency contact Command Post at 782-6000

Son Light Inn:

Monday-Thursday: 0800-2200

Friday: 0800-2359

Saturday: 1200-2359

Sunday: 1000-2200

Holiday: 1200-2200

Worship Services:

Sunday Catholic Mass: 0900

Tuesday - Thursday 1138

Sunday Protestant Service: 1100

Sunday Latter Day Saints: 1300

If you would like to volunteer as a Son Light Inn Innkeeper, please call 782-**HOPE (4673)**

Money Exchange

- On base, U.S. Currency can be exchanged for Korea won at the Loring Club, Community Bank and Credit Union.
- Korean Won can be withdrawn at the current daily conversion rate at ATM's in the main lobby of the Wolf Pack Lodge, outside the Dining Facility, Community Activity Center and between AAFES & commissary.
- U.S. currency can also be exchanged at a number of Korean Money bank exchanges.
- Be aware a charge will be assessed for all ATM transactions for non bank members.

Wolf Pack Lodge,

Bldg.314,

DSN: **782 - 1844** (Follow the Voice Prompts, for **Reservation: 0**)

Open 24 Hours

*Hours of operation, closing hours and schedules are subject to change without notice.

Dining On Base

Food Court (AAFES BX): Bldg 1113, [AAFES \(imenu360.com\)](http://AAFES(imenu360.com))

▫ Popeye's Chicken	782 – 4644/4677	Daily: 1100-2000
▫ Burger King	782 – 8622	Mon-Fri: 0700-2000
▫ Subway	782 – 5041	Daily: 1000-2000
▫ Taco Bell	782 – 8622	Daily: 1100-2000
▫ Starbucks	063-471-8281	Mon-Fri: 0700-1700 Sat, Sun: 0800-1700

Dining Facility – O'Malley DFAC: Bldg 550, DSN: 782-5160

Mon-Fri

- Breakfast: 0500-0830
- Lunch: 1100-1330
- Dinner: 1700-2000
- Midnight: 2300-2400

Weekends / Holidays / Downdays

- Brunch: 0700-1300
- Supper: 1700-1930
- Midnight: 2300-2400

Bowling Center (Take it North Bowling Center), Bldg 1057, DSN: 782-4608

- | | |
|----------------------|------------------|
| • Mon-Thu: 1100-2300 | • Sat: 1200-0100 |
| • Fri: 1100-0100 | • Sun: 1200-2300 |

Club (Lorling Club), Bldg 1025

Office: 782-4312
Mon-Fri: 0800-1630

Cash Cage
Sun: 1000-1600
Mon-Sat: 1000-2130

Olds Room
Fri: 1700-2400
Open per request

Catering Office: 782-4700/2894
Mon-Fri: 0800-1700
Appointments preferred

Dining Room

- ◆ **Lunch**
Mon-Fri: 1100-1300
- ◆ **Dinner**
Tue: 1700-2000 (Steak Night)
Thu: 1700-2000 (Mongolian BBQ)

Mickley's Pub

Mon-Thu: Opens at 1600
Mon: 1700-2000
Tue: 1700-2000 (Taco)
Wed: 1700-2000 (Wing Night)
Fri-Sat: 1600-0200

Wolf Pack Café, Bldg 1027 - Inside the Community Activity Center (CAC)

Daily : 24/7 Delivery: 1800-2400
(DSN) 782 - 5985 / (Comm) 063 - 470 - 5985 / 010-9917-7841

Dining Off Base

Dining off Base

There are numerous off base dining locations in the immediate area and throughout Korea. See the front desk for a listing of restaurants. Local AAFES taxi drivers are familiar with these and many other off base dining options.

Appearance below does not constitute endorsement by Wolf Pack Lodge or the U.S. Air Force.

Chico's, 063-466-9157

- Mexican Restaurant in the Gangcheon shopping area.
- C-101, 34, Naun 2-gil, Kunsan-si, Jeollabuk-do. About 20-Minute Drive by AAFES Taxi
- 11:00-21:00

Lee sung dang, 063-445-2772

- Bakery (Since 1945, Oldest bakery in Korea)
- 177, Jungang-ro, Gunsan-si, Jeollabuk-do. About 30-Minute Drive by AAFES Taxi
- Daily: 08:00-22:00 (Summer season), 08:00-21:00 (Winter season)

Bridem Coffee & Brunch, 0507-1494-1611

- Brunch Cafe
- 73-5 Wondang-gil, Gunsan-si, Jeollabuk-do. About 15-Minute Drive by AAFES Taxi
- 09:00-21:00 (15:00-17:00 Break time)

MAKOTO Conveyor Belt Sushi, 063-468-8879

- Japanese Restaurant in Lotte Cinema Building.
- 198, Baekto-ro, Gunsan-si, Jeollabuk-do. About 20-Minute Drive by AAFES Taxi
- 12:00-22:00
- Closed Tuesday

Nojomi Ramen, 063-445-3984

- 68, Gyeong 7-gil, Kunsan-si, Jeollabuk-do
- Near the Modern Cultural History Street. About 30 Minute Drive by base taxi.
- 11:00-21:00
- Closed Tuesday

Outback Steakhouse, 0507-1422-0385

- 3F, Lotte Mall, 130 Jochon-ro, Gunsan-si, Jeollabuk-do. About 30-Minute Drive by AAFES Taxi
- 10:30-22:00 (Last order: 21:00)

Glutton House, Lasagna, Risotto, Pasta, 0507-1343-1515

- 32 Angin-ro, Gunsan-si, Jeollabuk-do. About 20-Minute Drive by AAFES Taxi
- 11:30-21:00 (15:00-17:00 Break time)

Dining Off Base

Paradiso Perduto, *Coffee, Wine, Beer, Pasta, Pizza, Sandwich, Steak* 063-471-8525

- Italian Restaurant near Eunpa Lake. About 15-Minute Drive by AAFES Taxi
- 76-11, Hanbat-ro, Kunsan-si, Jeollabuk-do
- Mon: 17:00-23:00
- Tue-Sun: 11:00-22:30 (Break time: 15:00-17:00)
- Last order: 21:00

Pok Seong Lu, 063-445-8412

- Chinese-style spicy noodles with vegetables, seafood and pork.
- 382, Wolmyeong-ro, Gunsan-si, Jeollabuk-do. About 20-Minute Drive by AAFES Taxi
- 10:00-16:00
- Closed Sunday

The Gal Bi, 063-468-7720

- Korean Style Barbeque.
- **Near the main gate**, daily: 11:00-23:00

Valentine Pizza, 063-442-4886

- Pizza and Pasta
- 6 Dongnyeong-gil, Gunsan-si, Jeollabuk-do. About 20-Minute Drive by AAFES Taxi
- 11:00-21:00 (Break time: 14:00-17:00)
- Closed Tuesday

Kitchen Hooga, *Hamburger restaurant*, 063-442-4886

- Burgers
- 32 Yang-an-ro, Gunsan-si, Jeollabuk-do. About 20-Minute Drive by AAFES Taxi
- 11:00-21:00 (Break time: 14:00-17:00)
- Closed Sunday

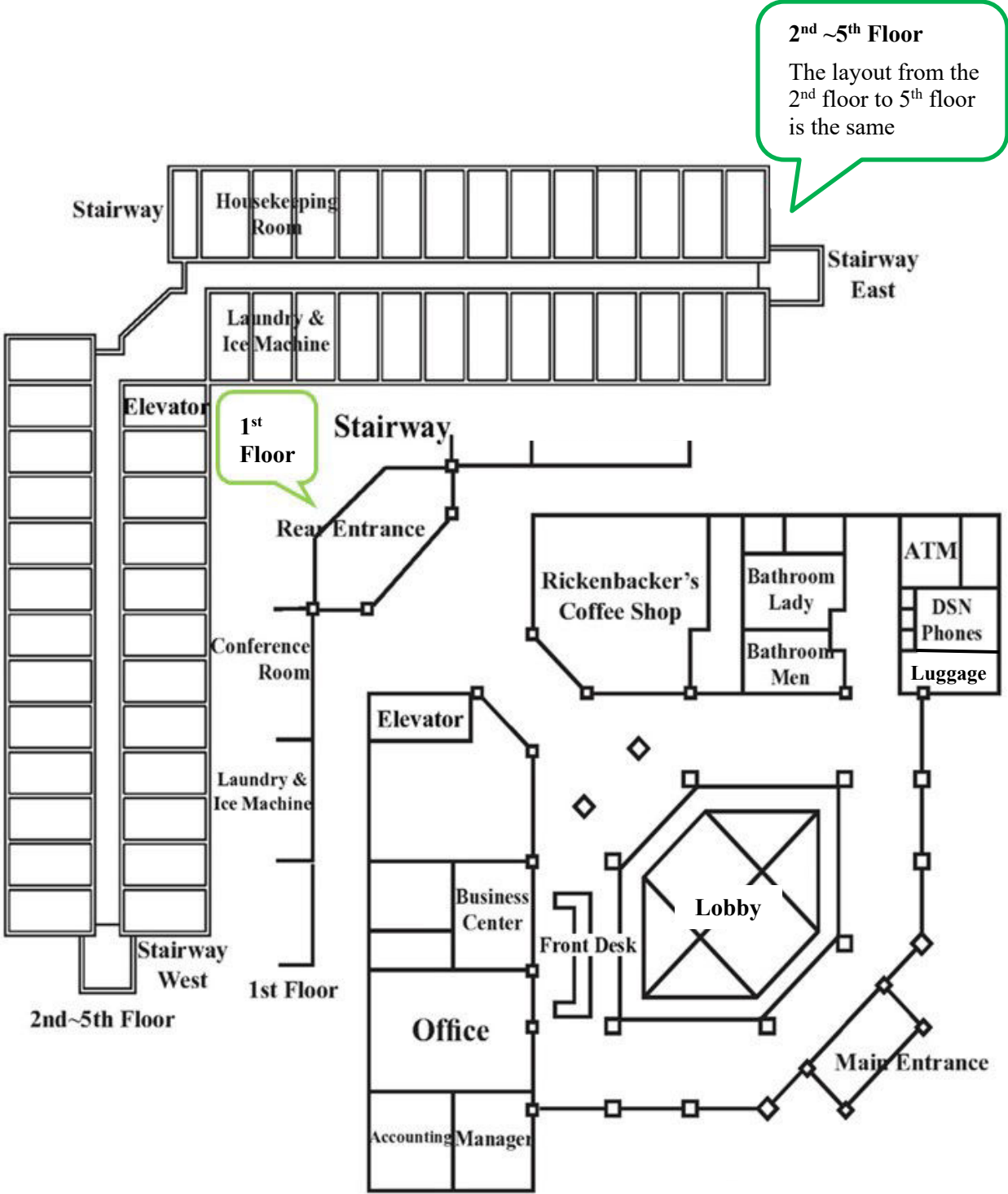
Myeongnyun Jinsa Galbi, *Korean BBQ restaurant*, 063-471-6265

- Burgers
- 443 Gondan-daero, Gunsan-si, Jeollabuk-do. About 17-Minute Drive by AAFES Taxi
- 11:00-22:00 (Last order: 20:30)
- Closed Monday

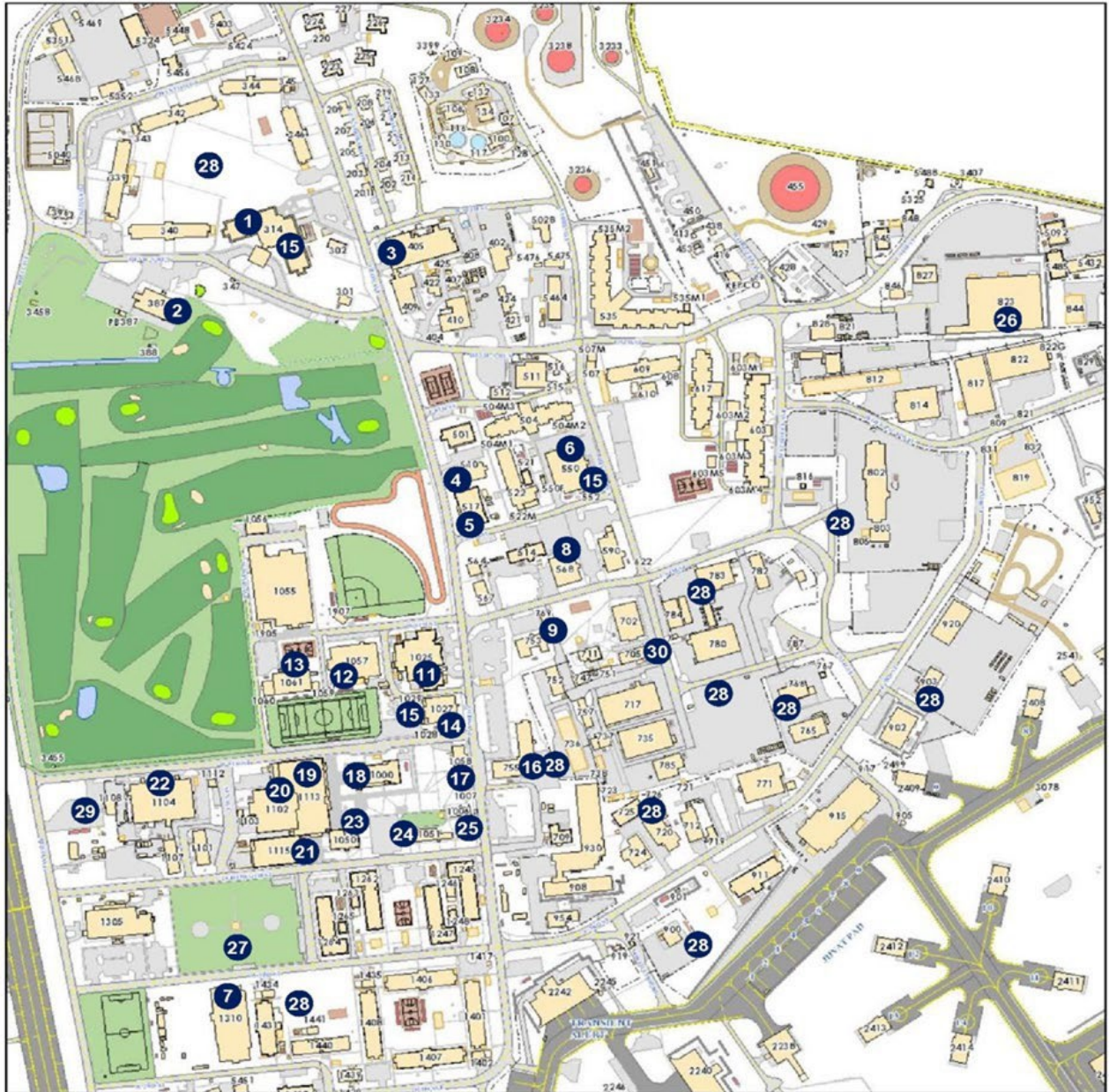
Hwayang Lamb Skewers, *Lamb Skewer restaurant*, 0507-1399-9256

- Lamb Skewer
- 18 Dongsusong 5-gil, Gunsan-si, Jeollabuk-do. About 20-Minute Drive by AAFES Taxi
- 17:00-24:00

Lodging Area Access



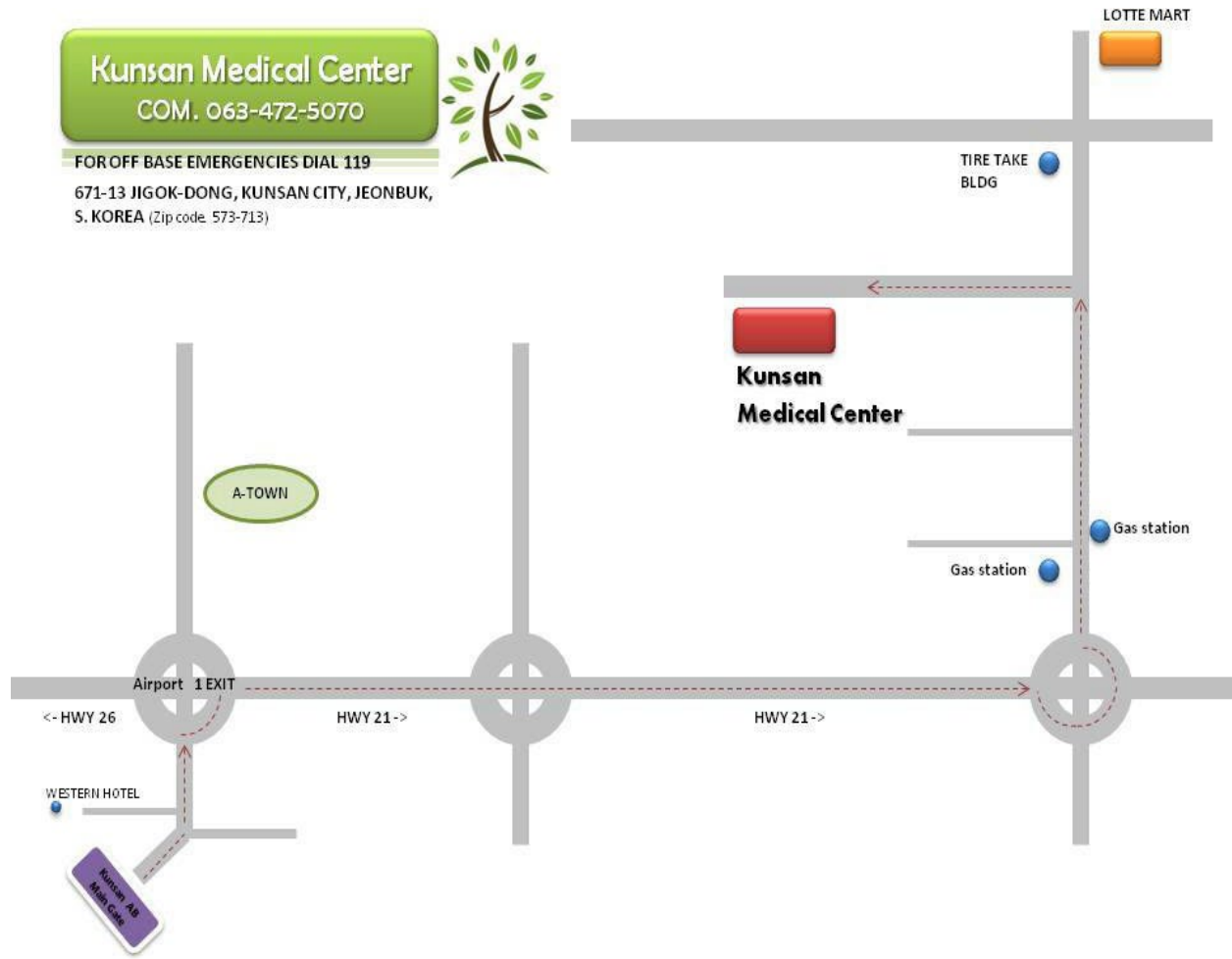
Kunsan Air Base Map



- | | | |
|------------------------|---------------------------------|-----------------------------|
| 1. Wolf Pack Lodge | 11. Loring Club | 21. Commissary |
| 2. West Wind Golf Club | 12. Take It North Bowling Alley | 22. LG UPlus & PME Center |
| 3. Clinic | 13. Swimming Pool | 23. Base Library |
| 4. Sonlight Inn | 14. Community Center | 24. Education Office |
| 5. Outdoor Recreation | 15. ATM Location | 25. Community Bank |
| 6. Dining Facility | 16. Military Personnel Flight | 26. Chem Gear Issue |
| 7. Security Forces | 17. Post Office | 27. Air Park |
| 8. Finance | 18. Base Theater | 28. Designated Tobacco Area |
| 9. Ace-In-Hole | 19. Food Court | 29. Gas Station |
| 10. Fitness Center | 20. Base Exchange | 30. Housing Office |

Medical Center

Off Base, Kunsan Medical Center



On Base Clinic, Bldg 405, 782-5378 (for Appointment)



Area Attractions

There are numerous opportunities for travel here at Kunsan AB, Korea. Kunsan Outdoor Recreation and the Community Center offer a variety of tours and group activities.

A few of the many include:

Community Activity Center & Tours (ITT), Bldg 1027, DSN: 782-4679

[Community Activity Center - 8th Force Support Squadron - Kunsan Air Force Base \(kunsanfss.com\)](http://kunsanfss.com)

Outdoor Recreation, Bldg 517, DSN: 782-6904

Art & Crafts / Wood Hobby Shop

[Arts & Crafts - 8th Force Support Squadron - Kunsan Air Force Base \(kunsanfss.com\)](http://kunsanfss.com)

Equipment Check Out / ODR

[Outdoor Recreation - 8th Force Support Squadron - Kunsan Air Force Base \(kunsanfss.com\)](http://kunsanfss.com)

Information, Tickets & Travel

[Information, Tickets & Travel - 8th Force Support Squadron - Kunsan Air Force Base \(kunsanfss.com\)](http://kunsanfss.com)

Swimming Pool (during Summer)

[Swimming Pool - 8th Force Support Squadron - Kunsan Air Force Base \(kunsanfss.com\)](http://kunsanfss.com)

**Hours of operation, closing hours and schedules are subject to change without notice.*

Contact information can be provided to you at the Front Desk. Additional information on up to date monthly trips can be found in the "Howler" magazine and on www.howleronline.com

Cable TV Channels

02 AFN Prime/Atlantic

03 AFN News

04 AFN Sports

05 AFN Prime/Pacific

06 AFN Spectrum

07 AFN Sports 2

08 AFN Family

09 AFN Movie

12 Commander's Access Channel

16 Kunsan AB Marketing Channel

AFN

✦ Tune into **88.5**

✦ Armed Forces Network on Your Clock Radio or **Channel 12**

✓ Every Friday 0830

✓ Listen to Wolf's Commentary

Transportation

On Base

- **Shuttle Service:**
Current shuttle schedules are available at the Front Desk.
- **Wheel, Wolf Pack Wheel, Bldg 517**
 - DSN: 782-6904
 - The Wolf Pack Wheel bus service offers transportation between Kunsan AB and Osan AB/Incheon Airport. Depart from the Falcon Community Center (CAC).
 - Current schedules are available at the Front Desk, in Howler magazine, and at the Falcon Community Center (CAC). [WPW schedule changes.pdf \(menlosecurity.com\)](#)
- **Car Rental, Bldg 1102**
 - Daily 1000-1900
 - From US: 001-82-10-7316-4500
 - Off-Post: 010-7316-4500
- **Taxi Service (AAFES):** There are 3 ways to call a Taxi
 - (DSN) 782-4318, (Comm) 063-470-4318 or 032-663-4121 or 1544-9080
 - Download AAFES Taxi App.
 - [Text to 1544 – 9080](#) as follows: [# pick up bldg # destination # Kunsan #](#)
- **Fare Free Mass Transit (FFMT): Mon -Fri**
 - Kunsan to Camp Carol: 0600 Camp Carol to Kunsan: 1630
 - Kunsan to Humphrey: 0630 Humphrey to Kunsan: 1630

** For more information call at 02-530-6096

Off Base: *Only Korean Won Currency is accepted for payment.

- **Off-Base Taxi Services**
 - Comm. 1577-9425 (Sae Man Geum), 1577-2860 (Hui Mang)
 - Korean taxis are readily available in most downtown areas.
 - Drivers speak very little English and most will expect payment in won or card.
- **Kunsan Express Bus Terminal**
 - The Kunsan Express Bus Terminal offers nonstop express service to **Seoul**(Gangnam terminal, Central City) for Yongsan Army Post, Itaewon shopping district, Seoul and transfers to other cities.
- **Kunsan Intercity Bus Terminal**
 - The Kunsan Intercity Bus Terminal offers nonstop express service to **Incheon Airport, Songtan**, Seoul(Nambu terminal) for Yongsan Army Post, Itaewon shopping district, Seoul and transfers to other cities.

History of Kunsan AB

The history of Kunsan Air Base dates back to 1938, when Japanese forces occupying Korea built a base near Kunsan for fighter-interceptor aircraft.

The United States first used the base in 1945, but on a very small scale. From 1945 to 1950, the Army and later the Air Force intermittently operated small detachments from Kunsan, with these detachments maintaining liaison aircraft. At most these detachments contained a handful of people. When the United States pulled its combat units out of the Republic of Korea in 1949, it left only a Military Assistance Advisory Group in the country, and the periodic detachments at Kunsan became even more infrequent.

Korean War

When the Korean War broke out on 25 June 1950, Kunsan Air Base had no United States flying units assigned. In their rapid advance, the invading North Koreans captured Kunsan Air Base on 13 July 1950.

The 24th Infantry Division retook Kunsan in October 1950, and the Chinese Communist Forces (CCF) Intervention Campaign that winter failed to push far enough south to put Kunsan in jeopardy. United States forces first operated in significant numbers from the base in 1951.

The first Air Force unit to be assigned to the base was the 27th Fighter-Escort Wing, which arrived on 1 April 1951. The 27th Fighter Escort Wing was one of the first F-84 units to see combat action in Korea and earned numerous honors and awards for their combat record during the Korean War.

Improvements to the base were needed, however, to accommodate jet fighters. The 27th FEW was reassigned at the end April and The Army's 808th Engineer Aviation Battalion built a 5,000 feet (1,500 m) runway to replace the sod runway constructed by Japanese. This runway is now known as Taxiway Charlie (06/24). By August, construction had progressed to the point that heavier units could be based at Kusan and the Air Force assigned the 3rd Bombardment Wing to Kunsan.

The 3rd Bomb Wing flew the Douglas B-26 Invader bomber during the war, remaining at Kunsan from August 1951 until October 1954. A Marine aviation squadron, VMF(N)-513, arrived in April 1952, and a few months later the base added the 474th Fighter-Bomber Group, wzhich included three squadrons of F-84 fighters, bringing the total size of the operation to one wing, one group, and a Marine fighter squadron. The 474th bombed and strafed such targets as bunkers, troops, artillery positions, bridges, vehicles, airfields, and power plants, and sometimes escorted bombers that attacked munitions factories and other objectives.

In April 1953, the 474th Fighter-Bomber Group returned to the United States and was replaced by the 49th Fighter-Bomber Wing, also flying the F-84.

During the Korean War, the large number of locations used for bases and the similarity of some geographical names prompted the Air Force to use alphanumeric identifiers for bases in addition to their proper designations. Under this system, each base in Korea received a "K number," simplifying positive identification when referring to the various bases. Kunsan received the number K-8, while Osan Air Base was also known as K-55.

History of Kunsan AB

Cold War

After hostilities ceased, the base began to draw down. The F-84 forces of the 49th Fighter-Bomber Wing left in November 1953, and by October 1954 the host unit of the base, the 3d Bombardment Wing, also departed. This left the base with a much-reduced mission. From 1953-1954, the 808th and 841st Engineering Aviation Battalions constructed what is today's main runway. For the next several years Kunsan merely hosted periodic rotations of fighter and light bomber squadrons, with base facilities maintained and operated by an air base group. In 1957 and 1958, the 6170th Air Base Group began to upgrade base facilities, increasing the runway from 5,000 to 9,000 feet (1,500 to 2,700 m) and building new dormitories.

Until the late 1960s, though, Kunsan remained relatively dormant, hosting temporary deployments of flying units and serving as a safe haven base for aircraft evacuated from Okinawa and Guam during typhoons. In 1965, the Republic of Korea Air Force assigned a squadron of F-86 fighters to the base. This ROKAF unit was the only permanently assigned flying contingent at Kunsan until after the Pueblo incident in 1968.

McDonnell Douglas F-4E-34-MC Phantom AF Serial No 67-0231 of the 16th Tactical Fighter Squadron on TDY from Eglin AFB Florida - Attached to 354th TFW at Kunsan AB South Korea - April 1, 1970. In 1980, this aircraft was sold to the Egyptian Air Force.

The 354th Tactical Fighter Wing, consisting of the Kansas Air National Guard (ANG) and a few members of the DC-ANG flying the F-100 Super Sabre, arrived at Kunsan in July 1968, as part of the buildup of forces in Korea in the wake of the February 1968 seizure of the USS Pueblo by the North Koreans. In 1969 the wing began a transition from the F-100 to the F-4 Phantom. The 354th remained until June 1970, when the base again returned to hosting temporary deployments, such as the four-month activation of the 54th Tactical Fighter Wing from June through October 1970. The 3rd Tactical Fighter Wing, previously designated the 3rd Bombardment Wing, stationed at Kunsan in the early 1950s, arrived in March 1971 to assume control of the base. Like the 354th and 54th, the 3rd Tactical Fighter Wing flew the F-4 Phantom. When it first arrived in May, the wing contained the 35th and 36th Tactical Fighter Squadrons. In September, the 80th Tactical Fighter Squadron replaced the 36th.

In September 1974 the 8th Tactical Fighter Wing, the "Wolf Pack," was transferred from Ubon Air Base, Thailand to replace the 3rd at Kunsan. The move took place in name only, as the 8th moved without personnel or equipment, absorbing all assets of the 3d Tactical Fighter Wing. This included the two flying squadrons, which continued to operate as the 35th and 80th Tactical Fighter Squadrons, reuniting the wing with two of its original squadrons.

Since then, the 8th has continued to serve as host unit of Kunsan Air Base, continually improving the base's facilities over the years.

Defend the base...Accept follow on forces...Take the fight north.